

SLIMFIX INTRODUCTION

SLIMFIX

INTRODUCTION

SLIMFIX INTRODUCTION

Tightening Tube

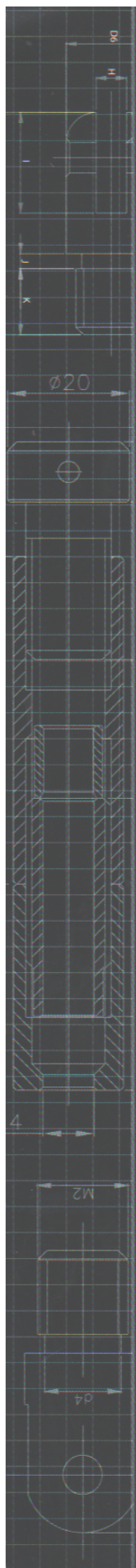
CIRCULAR BOLT SLIMFIX SET

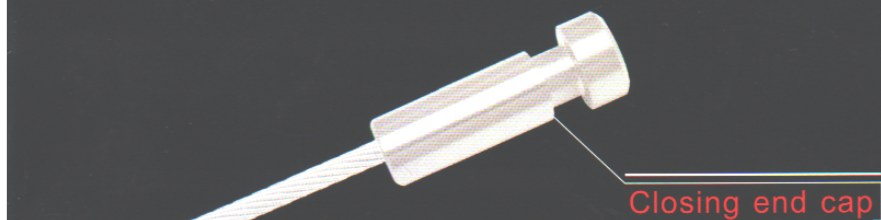
Circular Bolt

ANGLE SCREW SLIMFIX SET

Wooden screw

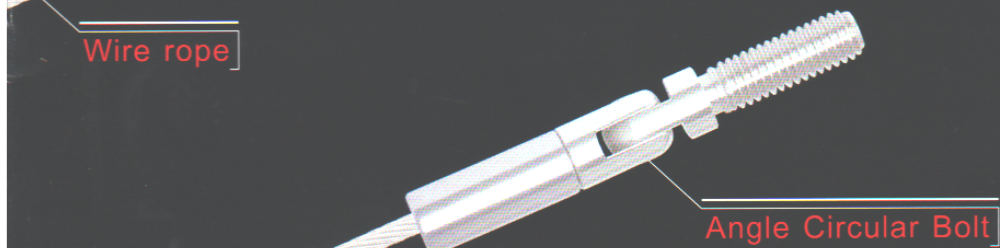
WOODEN SCREW SLIMFIX SET



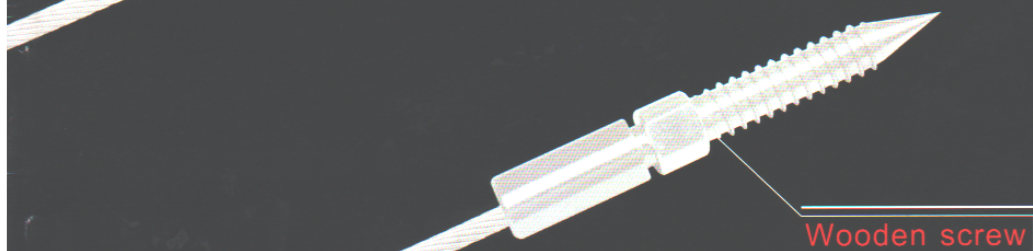


Wire rope

Closing end cap



Angle Circular Bolt



Wooden screw

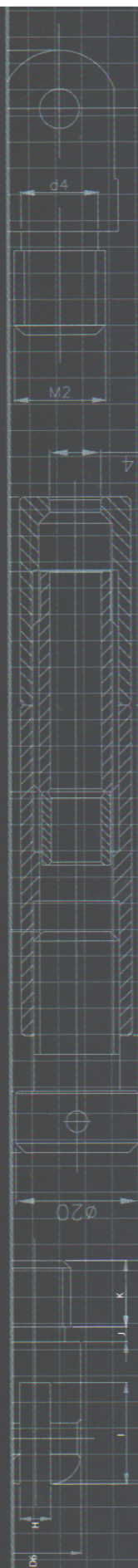
STAINLESS STEEL ARCHITECTURAL SLIMFIX

Slimfix started with the ideal of redesigning a fitting that is strictly architectural for purely balustrade use. As old cigar and frame type turnbuckles are bulky and more industrially design then decorative, and thimbles and wire clips were unpleasant looking. Slimfix was conceived to overcome these design neglects.

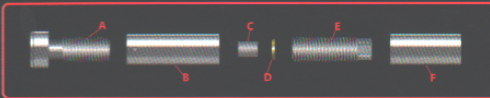
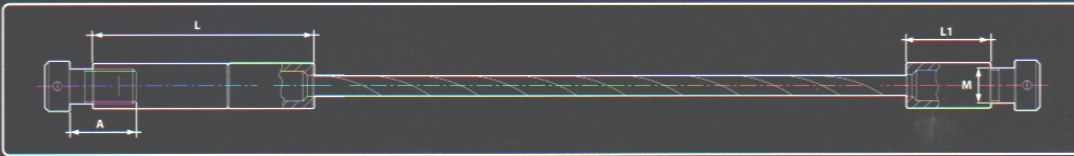
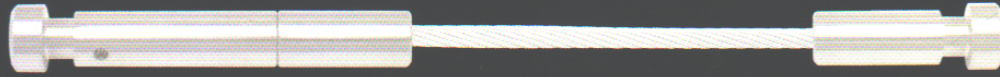
The first design feature is the "slim" profile Slimfix process. Slimfix is half the profile of conventional cigar or frame turnbuckles making Slimfix very aesthetic pleasing. Specially on short frames where conventional cigar turnbuckles would be longer than the actual wire used in the short frame, slimfix stands out as the perfect fittings.

Incorporating the internal adjustment casting, Slimfix has overcome the neglect of conventional turnbuckles thread exposing designs. Upon tightening of the wire, the closing end cap serves as a locking nut as well as conceiving internally all exposed thread.

Finally Slimfix system includes a variety of solutions for a perfect fit in all interior decorating scenarios. From wooden frame to granite stone floor, Slimfix will provide the perfect background setting for any wire balustrade needs.



CIRCULAR BOLT SLIMFIX SET



Adjusting end



Fixed end

Each Slimfix set order in this page comes with one set of each adjusting end and fixed end assemblies. These included 2 pcs of A. Circular Bolt, C. In-clamp ring, D. Brass ring, F. Closing end cap and 1pc of B. Tightening Tube, and E. Internal Screw. (seen as picture above)

Slimfix sizes 2.5 mm. & 3 mm. cable are designed for DIY installation. Sizes 4 mm. - 8 mm. are designed for Professional installation. Refer to page 6 and 7 for full information.



SHORT

SHORT SCREWS SLIMFIX SET

SFXT110320 & 120320 (Adjusting end + Fixed end)

Technical Data
Machining material : AISI316 - DIN 1.4401
Surface treatment : "M.F." (Matt finished)
Breaking load : Standard safety factor for working load is 1/4 of Breaking Load

| Order no. | wire (mm) | screw length (mm) | M (mm) | L (mm) | L1 (mm) | Breaking Load (KGS) |
|-----------|-----------|-------------------|----------|--------|---------|---------------------|
| 2110-3203 | 2.5 mm. | 14 | M8x1.25 | 58 | 23 | 100 |
| 2110-3204 | 3 mm. | 14 | M8x1.25 | 58 | 23 | 150 |
| 2110-3205 | 4 mm. | 14 | M8x1.25 | 58 | 23 | 400 |
| 2110-3206 | 5 mm. | 18 | M10x1.5 | 67 | 27 | 500 |
| 2110-3207 | 6 mm. | 24 | M12x1.75 | 77 | 32 | 700 |
| 2110-3208 | 8 mm. | 26 | M14x2 | 88 | 34 | 900 |



MEDIUM

MEDIUM SCREWS SLIMFIX SET

SFXT110321 & 120321 (Adjusting end + Fixed end)

Technical Data
Machining material : AISI316 - DIN 1.4401
Surface treatment : "M.F." (Matt finished)
Breaking load : Standard safety factor for working load is 1/4 of Breaking Load

| Order no. | wire (mm) | screw length (mm) | M (mm) | L (mm) | L1 (mm) | Breaking Load (KGS) |
|-----------|-----------|-------------------|----------|--------|---------|---------------------|
| 2110-3213 | 2.5 mm. | 24 | M8x1.25 | 58 | 23 | 100 |
| 2110-3219 | 3 mm. | 24 | M8x1.25 | 58 | 23 | 150 |
| 2110-3215 | 4 mm. | 24 | M8x1.25 | 58 | 23 | 400 |
| 2110-3216 | 5 mm. | 40 | M10x1.5 | 67 | 27 | 500 |
| 2110-3217 | 6 mm. | 60 | M12x1.75 | 77 | 32 | 700 |
| 2110-3218 | 8 mm. | 75 | M14x2 | 88 | 34 | 900 |



LONG

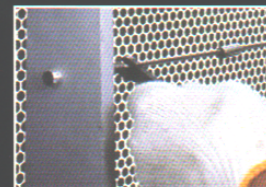
LONG SCREWS SLIMFIX SET

SFXT110322 & 120322 (Adjusting end + Fixed end)

Technical Data
Machining material : AISI316 - DIN 1.4401
Surface treatment : "M.F." (Matt finished)
Breaking load : Standard safety factor for working load is 1/4 of Breaking Load

| Order no. | wire (mm) | screw length (mm) | M (mm) | L (mm) | L1 (mm) | Breaking Load (KGS) |
|-----------|-----------|-------------------|----------|--------|---------|---------------------|
| 2110-3223 | 2.5 mm. | 60 | M8x1.25 | 58 | 23 | 100 |
| 2110-3224 | 3 mm. | 60 | M8x1.25 | 58 | 23 | 150 |
| 2110-3225 | 4 mm. | 60 | M8x1.25 | 58 | 23 | 400 |
| 2110-3226 | 5 mm. | 75 | M10x1.5 | 67 | 27 | 500 |
| 2110-3227 | 6 mm. | 100 | M12x1.75 | 77 | 32 | 700 |
| 2110-3228 | 8 mm. | 120 | M14x2 | 88 | 34 | 900 |

Private balcony are perfect candidates for Slimfix installations of cable 4 mm. These must be installed by a qualified professional.



Professional installation of 4 mm. cable balustrades.



SLIMFIX

SPECIFICATION © Copyright 2006 by Sludyra Thailand

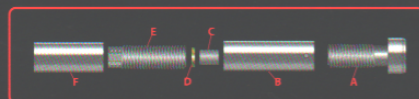
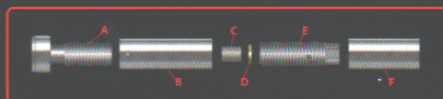
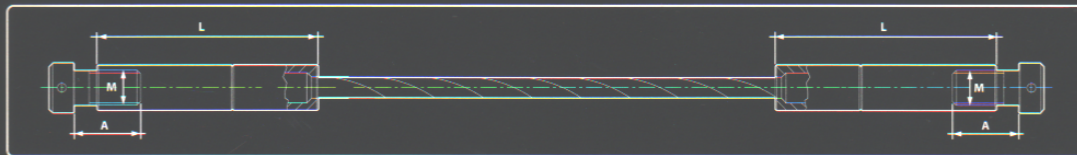
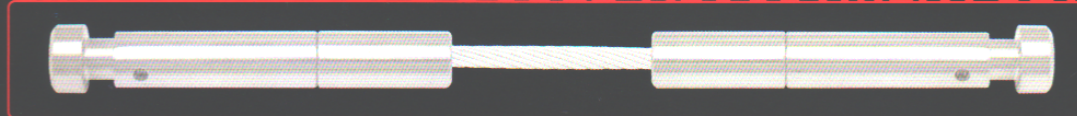


Unit Converting Formula

Kg = (kN x 1000) / 9.81

1 kg = 2.2046 lb 1 kN = 0.1004 ton
= 9.81 N 1 kg = 1000 g

CIRCULAR BOLT DOUBLE ADJUSTMENT SET



Adjusting end

Adjusting end

Each Slimfix set order in this page comes with two adjusting end assemblies. These included 2 pcs of each of the following A. Circular Bolt, B. Tightening Tube, C. In-clamp ring, D. Brass ring, E. Internal Screw, and F. Closing end cap (seen as picture above)

Slimfix sizes 2.5 mm. & 3 mm. cable are designed for DIY installation. Sizes 4 mm. - 8 mm. are designed for Professional installation. Refer to page 6 and 7 for full information.



SHORT

SHORT SCREWS SLIMFIX DOUBLE SET

SFXT110320 / DOUBLE (Adjusting end + Adjusting end)

Technical Data

Machining material : AISI316 - DIN 1.4401
Surface treatment : "M.F." (Matt finished)
Breaking load : Standard safety factor for working load is 1/4 of Breaking Load

| Order no. | wire (mm) | screw length (mm) | M (mm) | L (mm) | Breaking Load (KGS) |
|-----------|-----------|-------------------|----------|--------|---------------------|
| 2320-2512 | 2.5 mm. | 14 | M8x1.25 | 58 | 100 |
| 2320-0312 | 3 mm. | 14 | M8x1.25 | 58 | 150 |
| 2320-0412 | 4 mm. | 14 | M8x1.25 | 58 | 400 |
| 2320-0516 | 5 mm. | 18 | M10x1.5 | 67 | 500 |
| 2320-0618 | 6 mm. | 24 | M12x1.75 | 77 | 700 |
| 2320-0820 | 8 mm. | 26 | M14x2 | 88 | 900 |



MEDIUM

MEDIUM SCREWS SLIMFIX DOUBLE SET

SFXT110321 / DOUBLE (Adjusting end + Adjusting end)

Technical Data

Machining material : AISI316 - DIN 1.4401
Surface treatment : "M.F." (Matt finished)
Breaking load : Standard safety factor for working load is 1/4 of Breaking Load

| Order no. | wire (mm) | screw length (mm) | M (mm) | L (mm) | Breaking Load (KGS) |
|-----------|-----------|-------------------|----------|--------|---------------------|
| 2321-2512 | 2.5 mm. | 24 | M8x1.25 | 58 | 100 |
| 2321-0312 | 3 mm. | 24 | M8x1.25 | 58 | 150 |
| 2321-0412 | 4 mm. | 24 | M8x1.25 | 58 | 400 |
| 2321-0516 | 5 mm. | 40 | M10x1.5 | 67 | 500 |
| 2321-0618 | 6 mm. | 60 | M12x1.75 | 77 | 700 |
| 2321-0820 | 8 mm. | 75 | M14x2 | 88 | 900 |



LONG

LONG SCREWS SLIMFIX DOUBLE SET

SFXT110322 / DOUBLE (Adjusting end + Adjusting end)

Technical Data

Machining material : AISI316 - DIN 1.4401
Surface treatment : "M.F." (Matt finished)
Breaking load : Standard safety factor for working load is 1/4 of Breaking Load

| Order no. | wire (mm) | screw length (mm) | M (mm) | L (mm) | Breaking Load (KGS) |
|-----------|-----------|-------------------|----------|--------|---------------------|
| 2322-2512 | 2.5 mm. | 60 | M8x1.25 | 58 | 100 |
| 2322-0312 | 3 mm. | 60 | M8x1.25 | 58 | 150 |
| 2322-0412 | 4 mm. | 60 | M8x1.25 | 58 | 400 |
| 2322-0516 | 5 mm. | 75 | M10x1.5 | 67 | 500 |
| 2322-0618 | 6 mm. | 100 | M12x1.75 | 77 | 700 |
| 2322-0820 | 8 mm. | 120 | M14x2 | 88 | 900 |

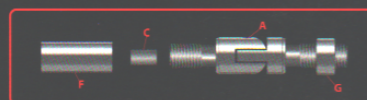
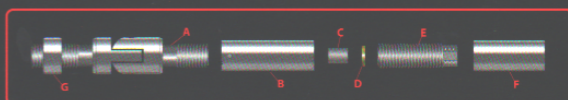
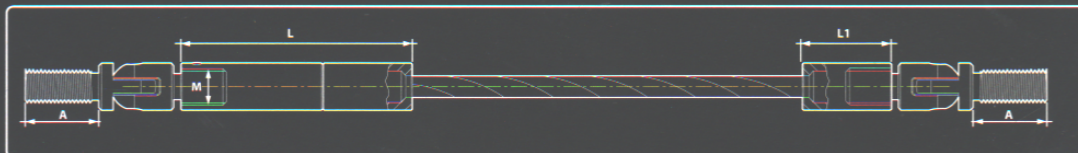
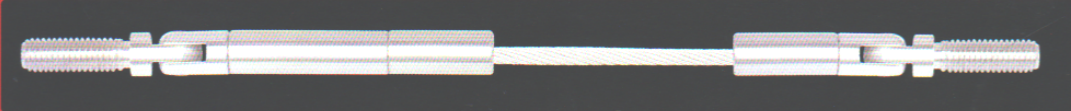
Larger 8 mm. cable Slimfix systems are recommended when installing an outdoor park balcony. Loctite must be applied after installation to prevent tempering.



SLIMFIX

SPECIFICATION © Copyright 2008 by Savodhya Thailand

ANGLE SCREW SLIMFIX SET



Adjusting end

Fixed end

Each Slimfix set order in this page comes with one set of each adjusting end and fixed end assemblies. These included 2 pcs of each following A. Angle Circular Bolt, C. In-clamp ring, D. Brass ring, F. Closing end cap, G. Angle end cap and 2 pcs of the following: B. Tightening Tube, and E. Internal Screw. (seen as picture above)

Slimfix sizes 2.5 mm. & 3 mm. cable are designed for DIY installation. Sizes 4 mm. - 8 mm. are designed for Professional installation. Refer to page 6 and 7 for full information.



SHORT

SHORT ANGLE SCREWS SLIMFIX SET SXT110350 & 120350 (Adjusting end + Fixed end)

Technical Data
Angle screw : Casting material
AISI316 - DIN 1.4408
Circular Bolt set : Machining material
AISI316 - DIN 1.4401
Surface treatment : "M.F." (Matt finished)
Breaking load : Standard safety factor for
working load is 1/4 of Breaking Load

| Order no. | wire (mm) | screw length (mm) | M (mm) | L (mm) | L1 (mm) | Breaking Load (KGS) |
|-----------|--------------|----------------------|-----------|-----------|------------|------------------------|
| 6110-1201 | 2.5 mm. | 14 | M8x1.25 | 58 | 23 | 100 |
| 6110-1202 | 3 mm. | 14 | M8x1.25 | 58 | 23 | 150 |
| 6110-1203 | 4 mm. | 14 | M8x1.25 | 58 | 23 | 400 |
| 6110-1204 | 5 mm. | 18 | M10x1.5 | 67 | 27 | 500 |
| 6110-1205 | 6 mm. | 24 | M12x1.75 | 77 | 32 | 700 |
| 6110-1206 | 8 mm. | 26 | M14x2 | 88 | 34 | 900 |

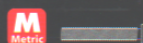


MEDIUM

MEDIUM ANGLE SCREWS SLIMFIX SET SXT110351 & 120351 (Adjusting end + Fixed end)

Technical Data
Angle screw : Casting material
AISI316 - DIN 1.4408
Circular Bolt set : Machining material
AISI316 - DIN 1.4401
Surface treatment : "M.F." (Matt finished)
Breaking load : Standard safety factor for
working load is 1/4 of Breaking Load

| Order no. | wire (mm) | screw length (mm) | M (mm) | L (mm) | L1 (mm) | Breaking Load (KGS) |
|-----------|--------------|----------------------|-----------|-----------|------------|------------------------|
| 6110-1207 | 2.5 mm. | 24 | M8x1.25 | 58 | 23 | 100 |
| 6110-1208 | 3 mm. | 24 | M8x1.25 | 58 | 23 | 150 |
| 6110-1209 | 4 mm. | 24 | M8x1.25 | 58 | 23 | 400 |
| 6110-1211 | 5 mm. | 40 | M10x1.5 | 67 | 27 | 500 |
| 6110-1212 | 6 mm. | 60 | M12x1.75 | 77 | 32 | 700 |
| 6110-1213 | 8 mm. | 75 | M14x2 | 88 | 34 | 900 |



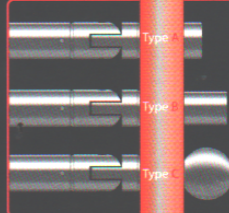
LONG

LONG ANGLE SCREWS SLIMFIX SET SXT110352 & 120352 (Adjusting end + Fixed end)

Technical Data
Angle screw : Casting material
AISI316 - DIN 1.4408
Circular Bolt set : Machining material
AISI316 - DIN 1.4401
Surface treatment : "M.F." (Matt finished)
Breaking load : Standard safety factor for
working load is 1/4 of Breaking Load

| Order no. | wire (mm) | screw length (mm) | M (mm) | L (mm) | L1 (mm) | Breaking Load (KGS) |
|-----------|--------------|----------------------|-----------|-----------|------------|------------------------|
| 6110-1214 | 2.5 mm. | 60 | M8x1.25 | 58 | 23 | 100 |
| 6110-1215 | 3 mm. | 60 | M8x1.25 | 58 | 23 | 150 |
| 6110-1216 | 4 mm. | 60 | M8x1.25 | 58 | 23 | 400 |
| 6110-1217 | 5 mm. | 75 | M10x1.5 | 67 | 27 | 500 |
| 6110-1218 | 6 mm. | 100 | M12x1.75 | 77 | 32 | 700 |
| 6110-1219 | 8 mm. | 120 | M14x2 | 88 | 34 | 900 |

ANGLE END CAP



Additional Locking nut for the outside of the balustrades post. Select your preference design on page 14.



Indoor stair balustrades with 4 mm. angle Slimfix installed



SLIMFIX

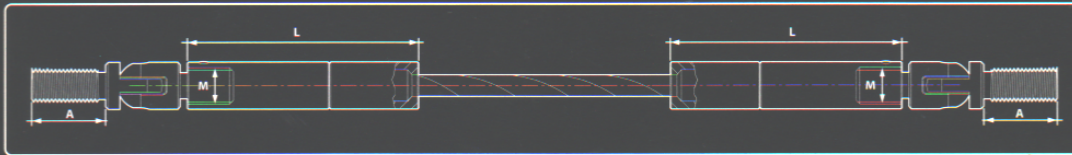
SPECIFICATION © Copyright 2008 by Sluay/ra Thailand



Unit Converting Formula

Kg = (kN x 1000) / 9.81
: 1 kg = 2.2046 lb : 1 kN = 0.1004 ton
= 9.81 N 1 ton = 1000 kg

ANGLE SCREW DOUBLE ADJUSTMENT SET



Adjusting end

Adjusting end

Each Slimfix set order in this page comes with two adjusting end assemblies. These included 2 pcs of each of following
A. Angle Circular Bolt, B. Tightening Tube, C. In-clamp ring, D. Brass ring, E. Internal Screw, F. Closing end cap, and
G. Angle end cap. (seen as picture above)

Slimfix sizes 2.5 mm. & 3 mm. cable are designed for DIY installation. Sizes 4 mm. - 8 mm. are designed for Professional installation. Refer to page 6 and 7 for full information.



SHORT

SHORT ANGLE SCREWS SLIMFIX DOUBLE SET SXT110350 / DOUBLE (Adjusting end + Adjusting end)

Technical Data
Angle screw : Casting material
 : AISI316 - DIN 1.4408
Circular Bolt set : Machining material
 : AISI316 - DIN 1.4401
Surface treatment : "M.F." (Matt finished)
Breaking load : Standard safety factor for
 : working load is 1/4 of Breaking Load

| Order no. | wire (mm) | screw length (mm) | M (mm) | L (mm) | Breaking Load (KGS) |
|-----------|-----------|-------------------|----------|--------|---------------------|
| 6350-2508 | 2.5 mm. | 14 | M8x1.25 | 58 | 100 |
| 6350-0308 | 3 mm. | 14 | M8x1.25 | 58 | 150 |
| 6350-0408 | 4 mm. | 14 | M8x1.25 | 58 | 400 |
| 6350-0510 | 5 mm. | 18 | M10x1.5 | 67 | 500 |
| 6350-0612 | 6 mm. | 24 | M12x1.75 | 77 | 700 |
| 6350-0814 | 8 mm. | 26 | M14x2 | 88 | 900 |



MEDIUM

MEDIUM ANGLE SCREWS SLIMFIX DOUBLE SET SXT110351 / DOUBLE (Adjusting end + Adjusting end)

Technical Data
Angle screw : Casting material
 : AISI316 - DIN 1.4408
Circular Bolt set : Machining material
 : AISI316 - DIN 1.4401
Surface treatment : "M.F." (Matt finished)
Breaking load : Standard safety factor for
 : working load is 1/4 of Breaking Load

| Order no. | wire (mm) | screw length (mm) | M (mm) | L (mm) | Breaking Load (KGS) |
|-----------|-----------|-------------------|----------|--------|---------------------|
| 6351-2508 | 2.5 mm. | 24 | M8x1.25 | 58 | 100 |
| 6351-0308 | 3 mm. | 24 | M8x1.25 | 58 | 150 |
| 6351-0408 | 4 mm. | 24 | M8x1.25 | 58 | 400 |
| 6351-0510 | 5 mm. | 40 | M10x1.5 | 67 | 500 |
| 6351-0612 | 6 mm. | 60 | M12x1.75 | 77 | 700 |
| 6351-0814 | 8 mm. | 75 | M14x2 | 88 | 900 |



LONG

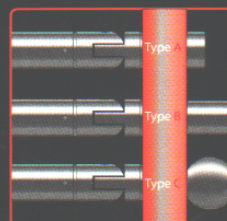
LONG ANGLE SCREWS SLIMFIX DOUBLE SET SXT110352 / DOUBLE (Adjusting end + Adjusting end)

Technical Data
Angle screw : Casting material
 : AISI316 - DIN 1.4408
Circular Bolt set : Machining material
 : AISI316 - DIN 1.4401
Surface treatment : "M.F." (Matt finished)
Breaking load : Standard safety factor for
 : working load is 1/4 of Breaking Load

| Order no. | wire (mm) | screw length (mm) | M (mm) | L (mm) | Breaking Load (KGS) |
|-----------|-----------|-------------------|----------|--------|---------------------|
| 6110-3529 | 2.5 mm. | 60 | M8x1.25 | 58 | 100 |
| 6110-3531 | 3 mm. | 60 | M8x1.25 | 58 | 150 |
| 6110-3532 | 4 mm. | 60 | M8x1.25 | 58 | 400 |
| 6110-3533 | 5 mm. | 75 | M10x1.5 | 67 | 500 |
| 6110-3534 | 6 mm. | 100 | M12x1.75 | 77 | 700 |
| 6110-3535 | 8 mm. | 120 | M14x2 | 88 | 900 |



Corporate office stair with 6 mm. angle Slimfix installed



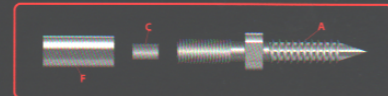
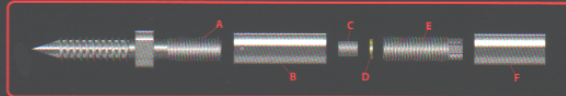
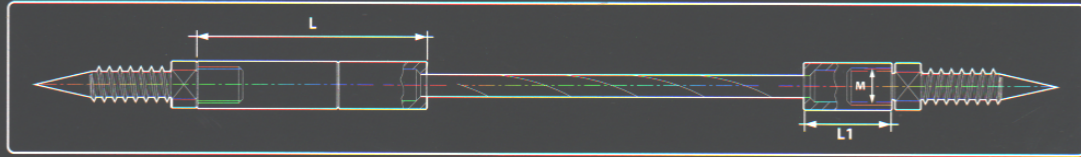
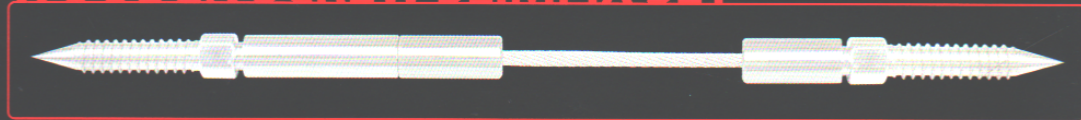
ANGLE END CAP

Additional Locking nut for the outside of the balustrades post. Select your preference design on page 14.

SLIMFIX

SPECIFICATION

WOODEN SCREW SLIMFIX SET



Adjusting end

Fixed end

Each Slimfix set order in this page comes with one set of each adjusting end and fixed end assemblies. These included 2 pcs of each of the following A. Wooden Circular Bolt, C. In-clamp ring, D. Brass ring, F. Closing end cap, and 1 pc of the following: B. Tightening Tube, and E. Internal Screw. (seen as picture above)

Slimfix sizes 2.5 mm. & 3 mm. cable are designed for DIY installation. Sizes 4 mm. - 8 mm. are designed for Professional installation. Refer to page 6 and 7 for full information.



WOODEN SCREWS SLIMFIX SET

SFXT110390 & 120390 (Adjusting end + Fixed end)

Technical Data

Machining material : AISI316 - DIN 1.4401
Surface treatment : "M.F." (Matt finished)
Breaking load : Standard safety factor for working load is 1/4 of Breaking Load

| Order no. | wire (mm) | screw length (mm) | M (mm) | L (mm) | L1 (mm) | Breaking Load (KGS) |
|-----------|-----------|-------------------|----------|--------|---------|---------------------|
| 2110-3903 | 2.5 mm. | 40 | M8x1.25 | 58 | 23 | 100 |
| 2110-3904 | 3 mm. | 40 | M8x1.25 | 58 | 23 | 150 |
| 2110-3905 | 4 mm. | 40 | M8x1.25 | 58 | 23 | 400 |
| 2110-3906 | 5 mm. | 55 | M10x1.5 | 67 | 27 | 500 |
| 2110-3907 | 6 mm. | 65 | M12x1.75 | 77 | 32 | 700 |
| 2110-3908 | 8 mm. | 71 | M14x2 | 88 | 34 | 900 |



Vertical Balustrade

Vertical window fencing with wooden screw Slimfix 4 mm. system to protect glass from children's game damage.

SLIMFIX

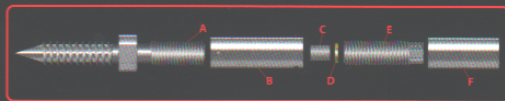
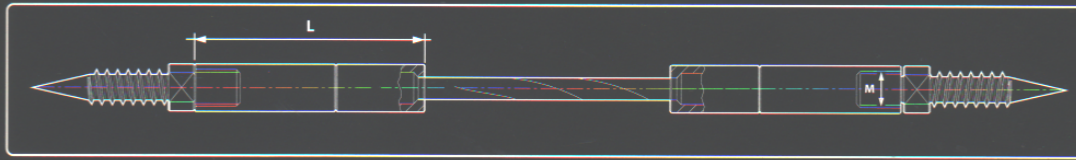
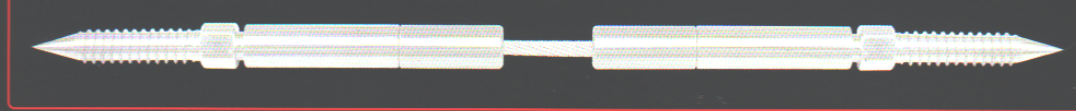
SPECIFICATION © Copyright 2006 by Sludrya Thailand



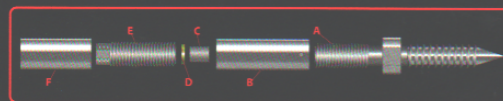
Unit Converting Formula

Kg = (kN x 1000)/9.81
; 1 kg = 2.2046 lb ; 1 kN = 0.1004 ton
= 9.81 N 1 ton = 1000 kg

WOODEN SCREW DOUBLE ADJUSTMENT SET



Adjusting end



Adjusting end

Each Slimfix set order in this page comes with two adjusting end assemblies. These included 2 pcs of each of following: A. Wooden Circular Bolt, B. Tightening Tube, C. In-clamp ring, D. Brass ring, E. Internal Screw, and F. Closing end cap. (seen as picture above)

Slimfix sizes 2.5 mm. & 3 mm. cable are designed for DIY installation. Sizes 4 mm. - 8 mm. are designed for Professional installation. Refer to page 6 and 7 for full information.



WOODEN SCREWS SLIMFIX DOUBLE SET

SFXT110390 / DOUBLE (Adjusting end + Adjusting end)

Technical Data

Machining material : AISI316 - DIN 1.4401
Surface treatment : "M.F." (Matt finished)
Breaking load : Standard safety factor for working load is 1/4 of Breaking Load

| Order no. | wire (mm) | screw length (mm) | M (mm) | L (mm) | Breaking Load (KGS) |
|-----------|-----------|-------------------|----------|--------|---------------------|
| 2110-3911 | 2.5 mm. | 40 | M8x1.25 | 58 | 100 |
| 2110-3912 | 3 mm. | 40 | M8x1.25 | 58 | 150 |
| 2110-3913 | 4 mm. | 40 | M8x1.25 | 58 | 400 |
| 2110-3914 | 5 mm. | 55 | M10x1.5 | 67 | 500 |
| 2110-3915 | 6 mm. | 65 | M12x1.75 | 77 | 700 |
| 2110-3916 | 8 mm. | 71 | M14x2 | 88 | 900 |

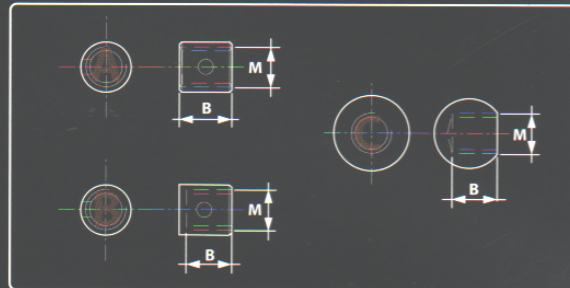
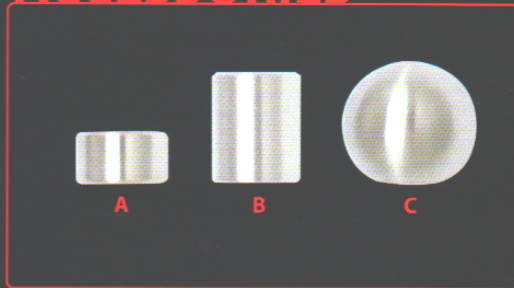
Private house garden fencing with wooden screw Slimfix 5 mm. system.



SLIMFIX
SPECIFICATION

Copyright 2004 by Studyline Thailand

ACCESSORIES



ANGLE END CAP (A)

BFXP550

Technical Data

Machining material : AISI316 - DIN 1.4401
Surface treatment : "M.F." (Matt finished)
Breaking load : Standard safety factor for working load is 1/4 of Breaking Load

| Order no. | SIZE | B (mm) | M (mm) | Breaking Load (KGS) |
|-----------|---------|--------|----------|---------------------|
| 2550-8710 | 2.5 mm. | 7 | M8x1.25 | 100 |
| 2550-8710 | 3 mm. | 7 | M8x1.25 | 150 |
| 2550-8710 | 4 mm. | 7 | M8x1.25 | 400 |
| 2550-1010 | 5 mm. | 10 | M10x1.5 | 500 |
| 2550-1212 | 6 mm. | 12 | M12x1.75 | 700 |
| 2550-1414 | 8 mm. | 14 | M14x2 | 900 |

ANGLE CROSSING END CAP (B)

BFXP560

Technical Data

Machining material : AISI316 - DIN 1.4401
Surface treatment : "M.F." (Matt finished)
Breaking load : Standard safety factor for working load is 1/4 of Breaking Load

| | | | | |
|-----------|---------|----|----------|-----|
| 2560-8013 | 2.5 mm. | 10 | M8x1.25 | 100 |
| 2560-8013 | 3 mm. | 10 | M8x1.25 | 150 |
| 2560-8013 | 4 mm. | 10 | M8x1.25 | 400 |
| 2560-1016 | 5 mm. | 13 | M10x1.5 | 500 |
| 2560-1220 | 6 mm. | 15 | M12x1.75 | 700 |
| 2560-1425 | 8 mm. | 20 | M14x2 | 900 |

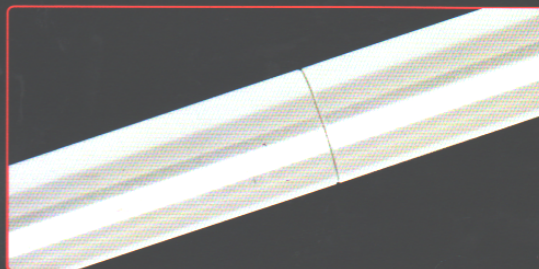
ANGLE BALL END CAP (C)

BXP570

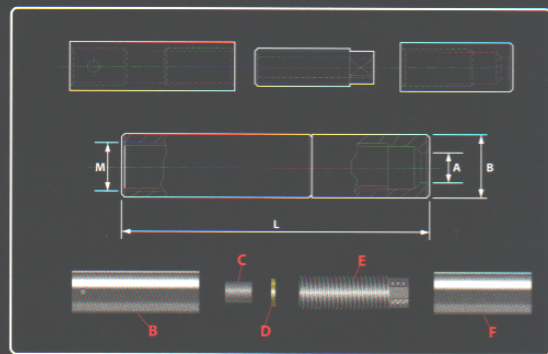
Technical Data

Casting material : AISI316 - DIN 1.4408
Surface treatment : "M.F." (Matt finished)
Breaking load : Standard safety factor for working load is 1/4 of Breaking Load

| | | | | |
|-----------|---------|----|----------|-----|
| 6570-0813 | 2.5 mm. | 10 | M8x1.25 | 100 |
| 6570-0813 | 3 mm. | 10 | M8x1.25 | 150 |
| 6570-0813 | 4 mm. | 10 | M8x1.25 | 400 |
| 6570-1016 | 5 mm. | 13 | M10x1.5 | 500 |
| 6570-1220 | 6 mm. | 15 | M12x1.75 | 700 |
| 6570-1425 | 8 mm. | 20 | M14x2 | 900 |



The assemblies of Slimfix Circular Bolt Set1 are included tightening tube, in-clamp ring, brass, internal screw, and closing end cap. (See the picture as the above)



B. Tightening Tube C. In-clamp ring D. Brass E. Internal Screw F. Closing end cap



SLIMFIX CIRCULAR BOLT SET 1

SFXT110

Technical Data

Forging material : AISI316 - DIN 1.4401
Surface treatment : "M.F." (Matt finished)
Breaking load : Standard safety factor for working load is 1/4 of Breaking Load

| Order no. | wire (mm) | A (mm) | B (mm) | M (mm) | L (mm) | Breaking Load (KGS) |
|-----------|-----------|--------|--------|----------|--------|---------------------|
| 2110-0205 | ø2.5 mm. | ø2.8 | ø10 | M8x1.25 | 58 | 100 |
| 2110-0003 | ø3 mm. | ø3.5 | ø10 | M8x1.25 | 58 | 150 |
| 2110-0004 | ø4 mm. | ø4.4 | ø10 | M8x1.25 | 58 | 400 |
| 2110-0005 | ø5 mm. | ø5.5 | ø12.7 | M10x1.5 | 67 | 500 |
| 2110-0006 | ø6 mm. | ø6.5 | ø16 | M12x1.75 | 77 | 700 |
| 2110-0008 | ø8 mm. | ø8.4 | ø18.1 | M14x2 | 88 | 900 |

SLIMFIX SPECIFICATION

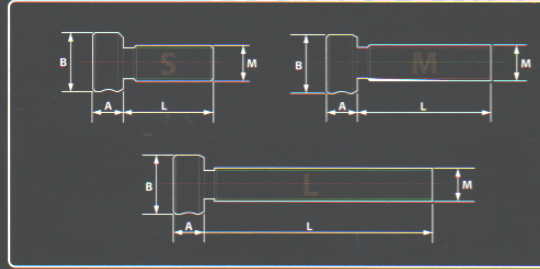
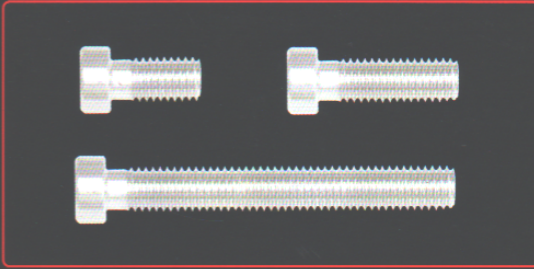


Unit Converting Formula

Kg = (kN x 1000)/9.81

: 1 kg = 2.2046 lb : 1 kN = 0.1004 ton
= 9.81 N : 1 ton = 1000 kg

ACCESSORIES



SHORT

CIRCULAR SHORT BOLT BFXN320

Technical Data
Machining material : AISI316 - DIN 1.4401
Surface treatment : "M.F." (Matt finished)
Breaking load : Standard safety factor for working load is 1/4 of Breaking Load

| Order no. | SIZE | A (mm) | B (mm) | M (mm) | L (mm) | Breaking Load (KGS) |
|-----------|---------|--------|--------|----------|--------|---------------------|
| 2320-1281 | 2.5 mm. | 6 | ø12 | M8x1.25 | 14 | 100 |
| 2320-1281 | 3 mm. | 6 | ø12 | M8x1.25 | 14 | 150 |
| 2320-1281 | 4 mm. | 6 | ø12 | M8x1.25 | 14 | 400 |
| 2320-1610 | 5 mm. | 7 | ø16 | M10x1.5 | 18 | 500 |
| 2320-1812 | 6 mm. | 8 | ø18 | M12x1.75 | 24 | 700 |
| 2320-2014 | 8 mm. | 10 | ø20 | M14x2 | 26 | 900 |



MEDIUM

CIRCULAR MEDIUM BOLT BFXN321

Technical Data
Machining material : AISI316 - DIN 1.4401
Surface treatment : "M.F." (Matt finished)
Breaking load : Standard safety factor for working load is 1/4 of Breaking Load

| Order no. | SIZE | A (mm) | B (mm) | M (mm) | L (mm) | Breaking Load (KGS) |
|-----------|---------|--------|--------|----------|--------|---------------------|
| 2321-1282 | 2.5 mm. | 6 | ø12 | M8x1.25 | 24 | 100 |
| 2321-1282 | 3 mm. | 6 | ø12 | M8x1.25 | 24 | 150 |
| 2321-1282 | 4 mm. | 6 | ø12 | M8x1.25 | 24 | 400 |
| 2321-1610 | 5 mm. | 7 | ø16 | M10x1.5 | 40 | 500 |
| 2321-1812 | 6 mm. | 8 | ø18 | M12x1.75 | 60 | 700 |
| 2321-2014 | 8 mm. | 10 | ø20 | M14x2 | 75 | 900 |

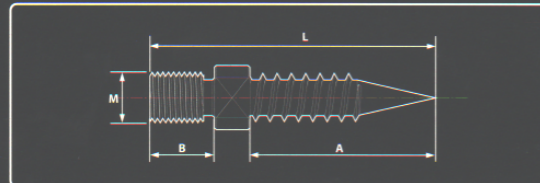
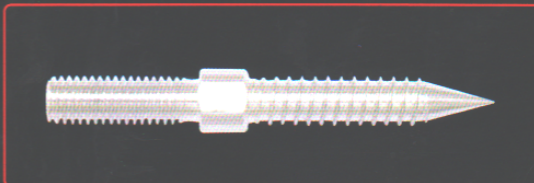


LONG

CIRCULAR LONG BOLT BFXN322

Technical Data
Machining material : AISI316 - DIN 1.4401
Surface treatment : "M.F." (Matt finished)
Breaking load : Standard safety factor for working load is 1/4 of Breaking Load

| Order no. | SIZE | A (mm) | B (mm) | M (mm) | L (mm) | Breaking Load (KGS) |
|-----------|---------|--------|--------|----------|--------|---------------------|
| 2322-1286 | 2.5 mm. | 6 | ø12 | M8x1.25 | 60 | 100 |
| 2322-1286 | 3 mm. | 6 | ø12 | M8x1.25 | 60 | 150 |
| 2322-1286 | 4 mm. | 6 | ø12 | M8x1.25 | 60 | 400 |
| 2322-1610 | 5 mm. | 7 | ø16 | M10x1.5 | 75 | 500 |
| 2322-1812 | 6 mm. | 8 | ø18 | M12x1.75 | 100 | 700 |
| 2322-2014 | 8 mm. | 10 | ø20 | M14x2 | 120 | 900 |



WOODEN SCREWS SLIMFIX SFXN390

Technical Data
Machining material : AISI316 - DIN 1.4401
Surface treatment : "M.F." (Matt finished)
Breaking load : Standard safety factor for working load is 1/4 of Breaking Load

| Order no. | SIZE | A (mm) | B (mm) | M (mm) | L (mm) | Breaking Load (KGS) |
|-----------|---------|--------|--------|----------|--------|---------------------|
| 2390-0824 | 2.5 mm. | 40 | 10 | M8x1.25 | 58 | 100 |
| 2390-0824 | 3 mm. | 40 | 10 | M8x1.25 | 58 | 150 |
| 2390-0824 | 4 mm. | 40 | 10 | M8x1.25 | 58 | 400 |
| 2390-1040 | 5 mm. | 55 | 12 | M10x1.5 | 77 | 500 |
| 2390-1260 | 6 mm. | 65 | 14 | M12x1.75 | 91 | 700 |
| 2390-1460 | 8 mm. | 71 | 16 | M14x2 | 101 | 900 |

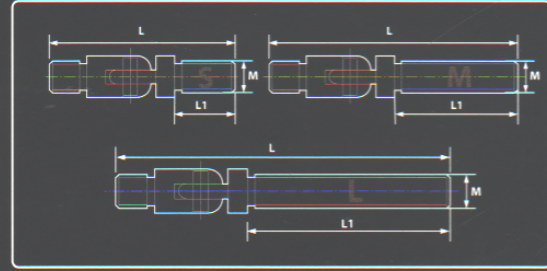
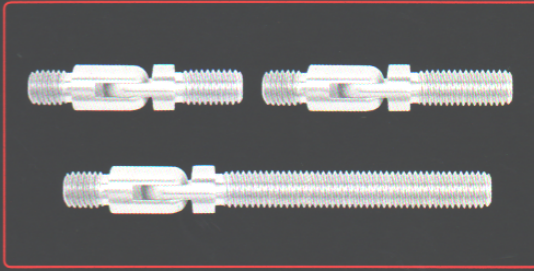


LOCTITE® LOC2-4250

Note : Installations must be checked up by a qualified professional after 2 weeks of installation. At which time we recommend using Loctite to seal of the installation specially in an outdoor setting.

* Loctite is a registered trademark of Henkel KGaA.

ACCESSORYS & TOOLS



SHORT

SHORT ANGLE SCREW SXN350

Technical Data
Casting material : AISI316 - DIN 1.4408
Surface treatment : "M.F." (Matt finished)
Breaking load : Standard safety factor for working load is 1/4 of Breaking Load

| Order no. | SIZE | L (mm) | L1 (mm) | M (mm) | Breaking Load (KGS) |
|-----------|---------|--------|---------|----------|---------------------|
| 6350-8101 | 2.5 mm. | 46 | 14 | M8x1.25 | 100 |
| 6350-8101 | 3 mm. | 46 | 14 | M8x1.25 | 150 |
| 6350-8101 | 4 mm. | 46 | 14 | M8x1.25 | 400 |
| 6350-1012 | 5 mm. | 56.5 | 18 | M10x1.5 | 500 |
| 6350-1214 | 6 mm. | 68 | 24 | M12x1.75 | 700 |
| 6350-1416 | 8 mm. | 80 | 25 | M14x2 | 900 |



MEDIUM

MEDIUM ANGLE SCREW SXN351

Technical Data
Casting material : AISI316 - DIN 1.4408
Surface treatment : "M.F." (Matt finished)
Breaking load : Standard safety factor for working load is 1/4 of Breaking Load

| Order no. | SIZE | L (mm) | L1 (mm) | M (mm) | Breaking Load (KGS) |
|-----------|---------|--------|---------|----------|---------------------|
| 6351-0810 | 2.5 mm. | 56 | 24 | M8x1.25 | 100 |
| 6351-0810 | 3 mm. | 56 | 24 | M8x1.25 | 150 |
| 6351-0810 | 4 mm. | 56 | 24 | M8x1.25 | 400 |
| 6351-1012 | 5 mm. | 78.5 | 40 | M10x1.5 | 500 |
| 6351-1214 | 6 mm. | 104 | 60 | M12x1.75 | 700 |
| 6351-1416 | 8 mm. | 129 | 75 | M14x2 | 900 |



LONG

LONG ANGLE SCREW SXN352

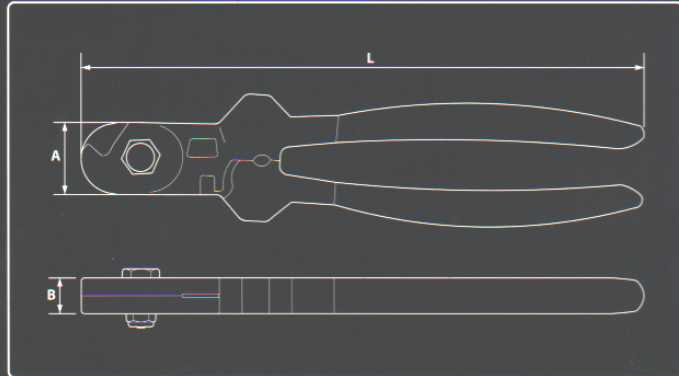
Technical Data
Casting material : AISI316 - DIN 1.4408
Surface treatment : "M.F." (Matt finished)
Breaking load : Standard safety factor for working load is 1/4 of Breaking Load

| Order no. | SIZE | L (mm) | L1 (mm) | M (mm) | Breaking Load (KGS) |
|-----------|---------|--------|---------|----------|---------------------|
| 6352-0810 | 2.5 mm. | 92 | 60 | M8x1.25 | 100 |
| 6352-0810 | 3 mm. | 92 | 60 | M8x1.25 | 150 |
| 6352-0810 | 4 mm. | 92 | 60 | M8x1.25 | 400 |
| 6352-1012 | 5 mm. | 113.5 | 75 | M10x1.5 | 500 |
| 6352-1214 | 6 mm. | 144 | 100 | M12x1.75 | 700 |
| 6352-1416 | 8 mm. | 174 | 120 | M14x2 | 900 |



WRC/2-NO.2 are specifically designed for slimfix cable 2.5 & 3 mm. DIY systems only.

Technical Data
Material: high carbon steel
Surface: Powder coated paint.
For DIY use only



| Order no. | SIZE | A (mm) | B (mm) | L (mm) |
|-----------|---------|--------|--------|--------|
| WRC2-0002 | 2.5 mm. | 4 | 12 | 20 |

NOTE : Note: Use WRC/2 for both cutting and swaging of 2.5 & 3mm Slimfix system.
For further details see page 6.



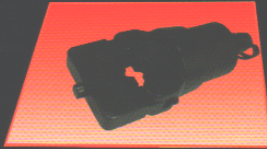
TOOLS



HYDRAULIC POWER PUMP
CTE2-5000

Technical Data
Input : 220 V 5 A
Weight Appx : 17 kgs. / set
For cable 4 mm. - 8 mm.

NOTE : Note: Hydraulic pump for swaging of 4~8mm slimfix system.



COMPRESSION TOOL BASE
C0325

Technical Data
Weight Appx : 4 kgs. / Pc.
For cable 4 mm. - 8 mm.

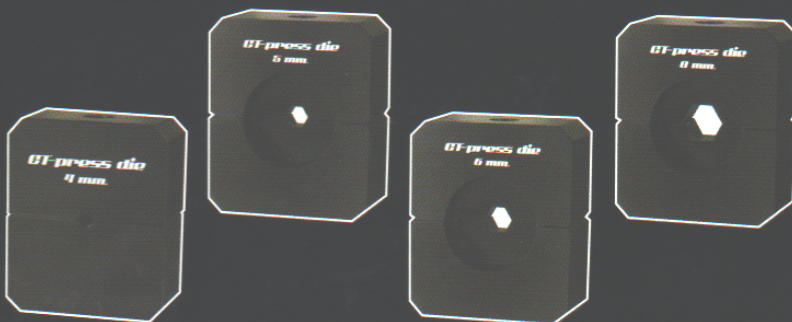
NOTE : Note: C0325 must be connected to a hydraulic pump such as CTE15AG (or equivalent) and a Cutting die or Press die inserted for operation.



CT - cutting die 9027-4548

Technical Data
High carbonsteel point coated : DC53
Weight Appx. : 0.4 kgs.
For cable 4 mm. - 8 mm.

Insert CT- cutting die into Tool base C0325 for operation. For more information see page 7.



CT - press die

Technical Data
High carbonsteel point coated : DC53
Weight Appx. : 0.4 kgs.
Size (cable) : 4 mm. - 8 mm.

Insert CT-press die into Tool base C0325 for operation. For more information see page 7.

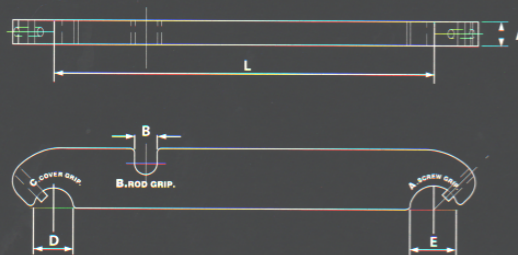
| Order no. | SIZE |
|-----------|-------|
| 9041-4554 | 4 mm. |
| 9055-4554 | 5 mm. |
| 9073-4554 | 6 mm. |
| 9086-4554 | 8 mm. |



SLIMKEY
SSK

Technical Data
Casting material : AISI316 - DIN 1.4408
Surface treatment : "M.F." (Matt finished)
Note : All installation require at least 2 sets of SSK Slimkey for proper installation

NOTE : Minimum of 2 slimkeys is required per installation.



| Order no. | SIZE | A (mm) | B (mm) | D (mm) | E (mm) | L (mm) |
|-----------|---------|--------|--------|--------|--------|--------|
| 7000-0004 | 2.5 mm. | 6 | 5.6 | 10 | 12 | 95 |
| 7000-0004 | 3 mm. | 6 | 5.6 | 10 | 12 | 95 |
| 7000-0004 | 4 mm. | 6 | 5.6 | 10 | 12 | 95 |
| 7000-0005 | 5 mm. | 6 | 7 | 12.6 | 16 | 105 |
| 7000-0006 | 6 mm. | 6 | 8.2 | 16 | 18 | 105 |
| 7000-0008 | 8 mm. | 6 | 10.2 | 18 | 20 | 115 |

SLIMFIX
SPECIFICATION

Copyright 2008 by Slimfix Thailand

TENSILE COMPARISON TEST

Description: Slimfix

Machining material: AISI 316

Standard: DIN 1.4401

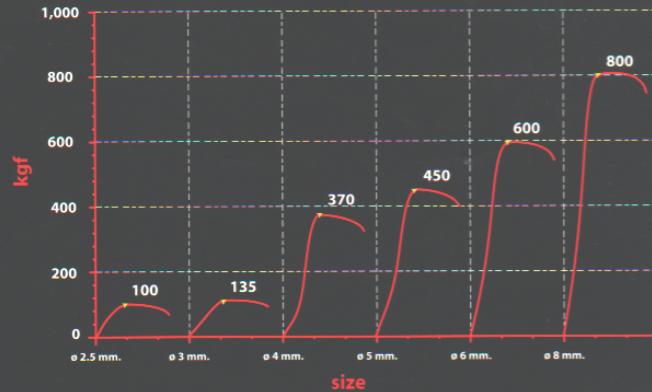
"Note: Standard safety factor for the working load is 1/4 of the breaking load."

The tensile test graph below illustrates the breaking loads of Hybrid Tensioner in different sizes.

In addition to this graph, this test measures the difference in ductility between the two elements by using size of Hybrid Tensioner against breaking load (kg). The test is performed using random selected samples from the manufacturing line and performed under 25 degrees and 50% humidity conditions.

| NO | SPECIME | AREA mm ² | PEAK kgf |
|----|-----------|-------------------------|-------------|
| 1 | ø 2.5 mm. | 4.909 | 100 |
| 2 | ø 3 mm. | 7.069 | 135 |
| 3 | ø 4 mm. | 12.566 | 370 |
| 4 | ø 5 mm. | 19.635 | 450 |
| 5 | ø 6 mm. | 28.274 | 600 |
| 6 | ø 8 mm. | 50.265 | 800 |

Source: Tested from actual samples of Slimfix set in Kinzi testing lab in March, 2006.



Terms and Conditions of Sale

General

For the purpose of these terms and conditions of sale, Structural Dynamics Co., Ltd. (Strudyna) should be referred to as "Manufacture". Any related companies and representatives of Strudyna is referred to as a "Local distributor". Any Client purchasing the Structural Dynamic items shall be referred to as the "Buyer". Products described and presented in this catalog shall be referred to as the "goods".

These general terms and conditions of sale will apply to all sales of Structural Dynamic items described in this catalog and serves as a binding contract and agreement between manufacture, local distributor and buyer.

Price conditions

Prices quoted by local distributor to buyer shall remain unchanged for the duration of 14 days unless quantities, packaging instructions, delivery destinations or any contract details are changed. Unless further stated in order confirmation, prices are ex-local distributor premises. Should a delivery destination be reached by local distributor and buyer, the local distributor is entitled to choose any means of transport the local distributor sees it fit.

Title and Risk

The local distributor shall hold the title and proprietary ownership of the goods until 100% of payment to the goods have been paid by the buyer to the local distributor. However unless prior written consent is agreed, the risk of damage to the goods shall be passed to the buyer upon the receipt of the goods by the buyer.

Cancellation

Goods purchased and confirmed by buyer may not be subject to cancellation, unless a prior written consent is given by the manufacture or local distributor to the buyer.

Force majeure

In the event of unpredictable natural or political cause beyond the manufacturer's and local distributor's control such as but not limited to: War, Rebellion, Piracy, Civil Commotion, Political unrest, Strike or industrial dispute, fire, earthquake, flooding or draught or bad weather, the unavailability of materials or delay delivery of suppliers, the inability to secure labour force or by any other cause whatsoever beyond the Manufacturer's and Local distributor's control, the manufacture and local distributor shall notify promptly to the buyer the cause of force majeure. The manufacture and Local distributor shall have the right to cancel the contract to deliver so long as the force majeure shall continue.

Warranty

The products listed in this catalog are supplied to the buyer with a guarantee of being free from detective craftsmanship and materials at the time of shipment. Shall to buyer be dissatisfied with the product, a written notice must be sent to local distributor within 14 days from receipt of goods and subject to replacement or cancellation of order by choice of local distributor and manufacture. The manufacture warrants that in normal usage and with proper maintenance, goods will perform under its specifications for a period of 5 years. Any goods which prove to be defective under normal use will be repaired or replaced at the manufacturer's option. The manufacture and local distributor accept no responsibility if the goods purchased from this catalog are used in applications where their safe working load listed in this catalog is exceeded or in cases where goods are improperly installed. The manufacture and local supplier make no representations for suitability to a particular design application setting. All good supplied in this catalog carry a limited lifetime warranty from the manufacture.

Specifications

The manufacture is constantly testing and improving the performance of products, thus specifications are subject to change without notice. For the latest information please contact your local distributor.





The drive behind the development of the Structural Dynamics (Strudyna) products range is an emphasis on "SOAD" theory. This stands for "Strictly Architectural Oriented Design". Its a simple idea: An emphasis on specifying the correct fitting for the correct architectural or structural scenario.

In many cases, an improper marine or architectural fittings are specified in an inappropriate application, making the structural design too exposed, wrongly shaped or poorly detailed.

Like all design trends, architectural design trends change, evolve and adapt, to express the needs of people and time. Similarly, Strudyna's goal is to adapt, develop and drive innovative changes with a simple theory: Strictly Architectural Oriented Design!

The product series listed on this page are part of a bigger architectural program we are committed to fulfil. Each Product series fulfils an architectural need, without compromise.

ROD DYNAMIC V 2.0



Architectural Tension Rod Systems, for canopy and Facade applications

PD-ADJUSTER V 1.0



Dyform cable clevis systems for vertical and horizontal glass facade settings.

SLIMFIX V 1.2



Architectural Wire Balustrade Systems.

TRI-AXIL V 1.0



Point fix systems, to unleash all geometric boundaries in a decorative facade setting.

HYBRID TENSIONER V 1.0



Hybrid clevis systems combining the best of rod, slimfix and swage systems.

RM-ADJUSTER V 1.0



Architectural Rigging systems for fabric membrane systems.

SLIMFIX
SPECIFICATION

© Copyright 2006 by Strudyna, Thailand